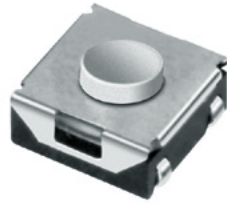


TACT switch

Surface mount Type (6.5 X 6.5 mm)

MODEL NO.
1158 Series



Features

- Surface mount type tact switch.
- Outline dimension 6.5mm x 6.5mm and 3.4mm or 5.1mm height.
- Dust & Moisture protective structure.
- Rubber knob type
- Soft & Overstroke feeling operation.

Applications

- Level controls for car audio & navigation system.
- Various controls for devices in automotive.
- Controls for image/sound devices, radio equipment.
- Operating signal input switches, etc.



Main Specifications

Rating	50mA 12V DC		
Travel	0.25±0.1mm		
Contact Resistance	100 mΩ max.		
Operating temperature	-20℃ ~ 70℃(45% ~ 85% RH)		
Bounce	10 m sec max.		
Operating Force	160gf	200gf	250gf
Operating Life	100,000 Cycles		

Subsidiary Production Code

Code number	Operating direction	Knob Height	Drawing
1158□	Vertical	3.4mm=Default / 5.1 mm = A	1

No.	3D	Dimension Type	P.C.B pattern dimension									
1		<p>1158□</p> <table border="1"> <thead> <tr> <th>□</th> <th>h</th> <th>ØA</th> </tr> </thead> <tbody> <tr> <td>-</td> <td>3.4</td> <td>3</td> </tr> <tr> <td>A</td> <td>5.1</td> <td>2.6</td> </tr> </tbody> </table>	□	h	ØA	-	3.4	3	A	5.1	2.6	<p>Circuit Diagram</p>
□	h	ØA										
-	3.4	3										
A	5.1	2.6										