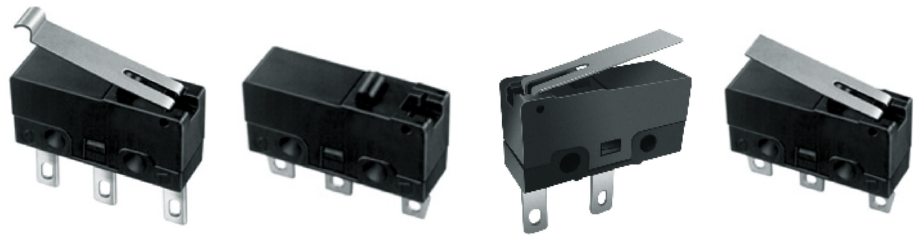


MICRO switch

Snap Action Type
(Hinge Type)

MODEL NO.
1288 Series



Features

Miniature Micro Snap action switch.

Various Terminal, Lever, Inner structure types

Long life cycles.

Applications

Car sun visor,

Gas Ovenrange of household appliances

Testing, Office equipment

Operating signal input switches, etc.



Main Specifications

Rating	1288 / 1288Q	3A 250V AC (With Ag Contact Plate)
	1288N / 1288QN	1A 125V AC (Without Ag Contact Plate)
Contact Resistance	100mΩ Max.	
Operating temperature	-20℃ ~ 70℃(45% ~ 85% RH)	
Operating Force	150gf Max. (Without Lever)	
Operating Life	100,000 Cycles	

Subsidiary Production Code

Code number	Operating Type	Terminal Shape	Terminal Thickness	Drawing
1288 / 1288N	Spring Plate Type	Short Terminal	0.5	1
1288Q / 1288QN		Long Terminal		2

No.	3D	Dimension Type	
-----	----	----------------	--

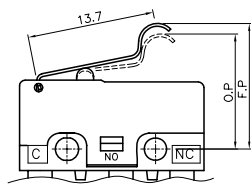
1288

1		Unit : mm	3D

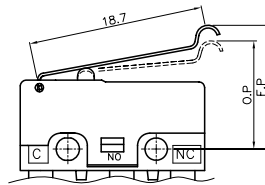
1288Q

2		Unit : mm	3D

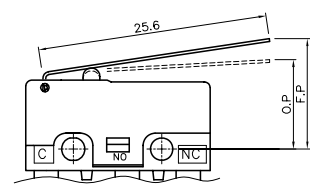
Lever Type



RS Level



R Level



L Level

1288RS/1288QRS/1288NRS/1288QNRS 1288R/1288QR/1288NR/1288QNR 1288L/1288QL/1288NL/1288QNL

O.F(g.f)	80gf Max.	80gf Max.	80gf Max.
O.P(mm)	11.65 ±0.8	10 ±0.8	8.8 ±0.8
F.P(mm)	15 Max.	15 Max.	16 Max.