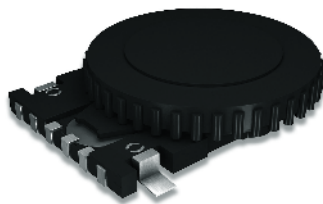


ENCODER switch

**Multy Fuction
Surface mount Type**

MODEL NO.
1511 Series



Features

Compact with thin profile

A push on switch with a clear-click operational feel

An encoder with detents and excellent operating feeling

Applications

Menu selection and input for Audio Visual Equipment

Memory paging and transmitting

Portable audio devices, Personal digital assistant.



Main Specifications

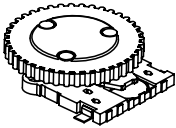
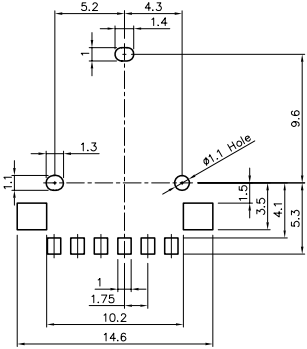
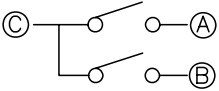
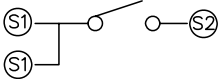
	Encoder	Push on
Rating	1mA 10V DC	50mA 12V DC
Detent(pulse) /Travel	15 pulses	0.3mm
Contact Resistance	1 Ω max.	100mΩ max.
Operating Force	1mN·m to 10mN·m	500gf
Operating Life	100,000 Cycles	

Subsidiary Production Code

Code number	Operating direction	Guide Boss	Drawing
1511	Horizontal	With	1

Packing Specification

Quantity (unit:pcs)	Pitch (unit:mm)	Remark
400	24	Bobbin Size Ø330

No.	3D	P.C.B pattern dimension	Circuit Diagram
1		<p style="text-align: center;">1511</p> 	<p>Encoder Portion</p>  <p>Push Portion</p> 

Unit : mm

